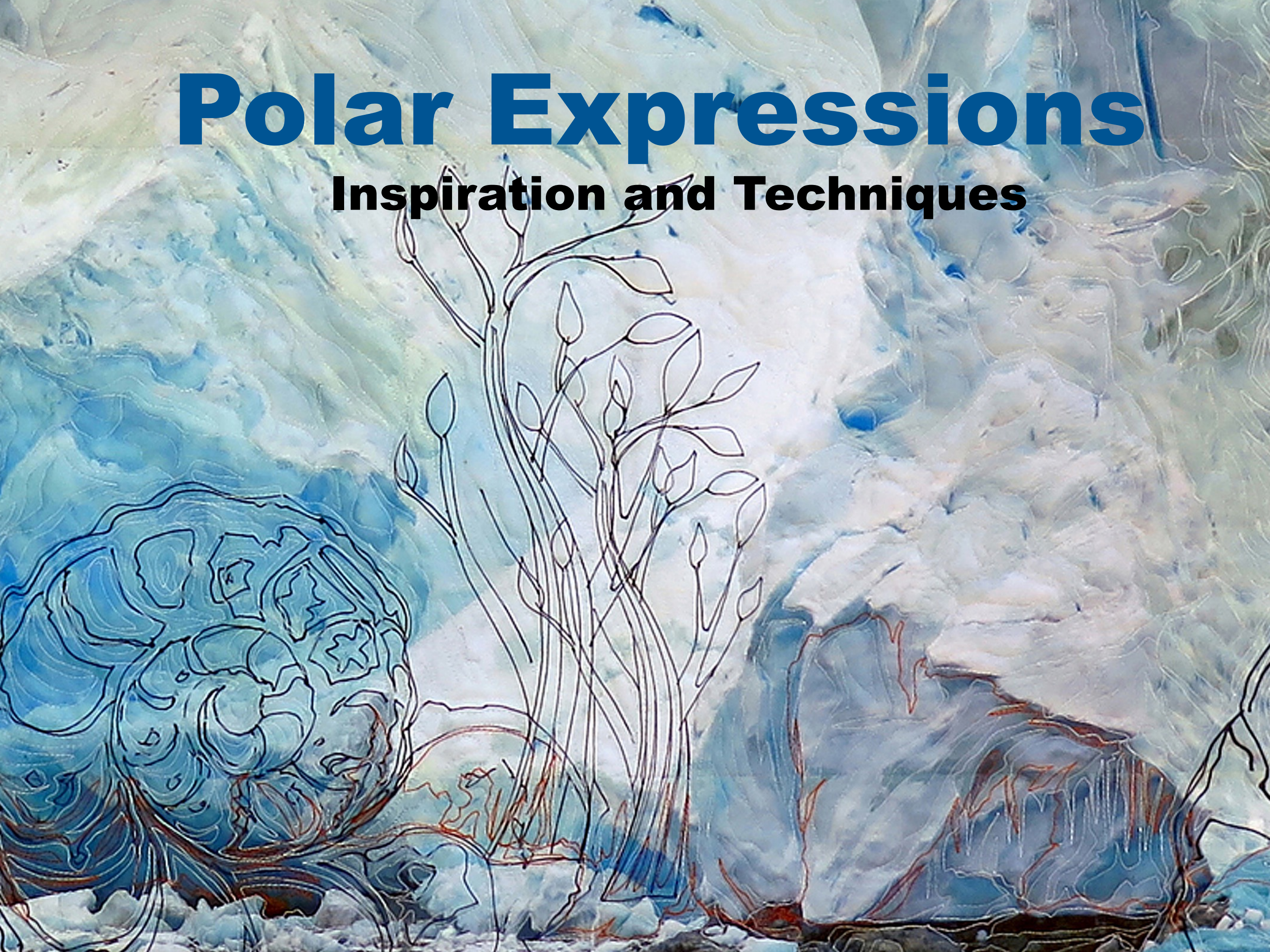


Polar Expressions

Inspiration and Techniques





Northern Reflections The first quilt made was based on stories from Inuit prints. 1995



Further research took me to Baker Lake in Arctic Canada in early May 1998 to celebrate their Hamlet Days spring festival. The colours of melting ice on the tundra influenced many future pieces of work. Sketchbook drawings were done based on stories and folklore.





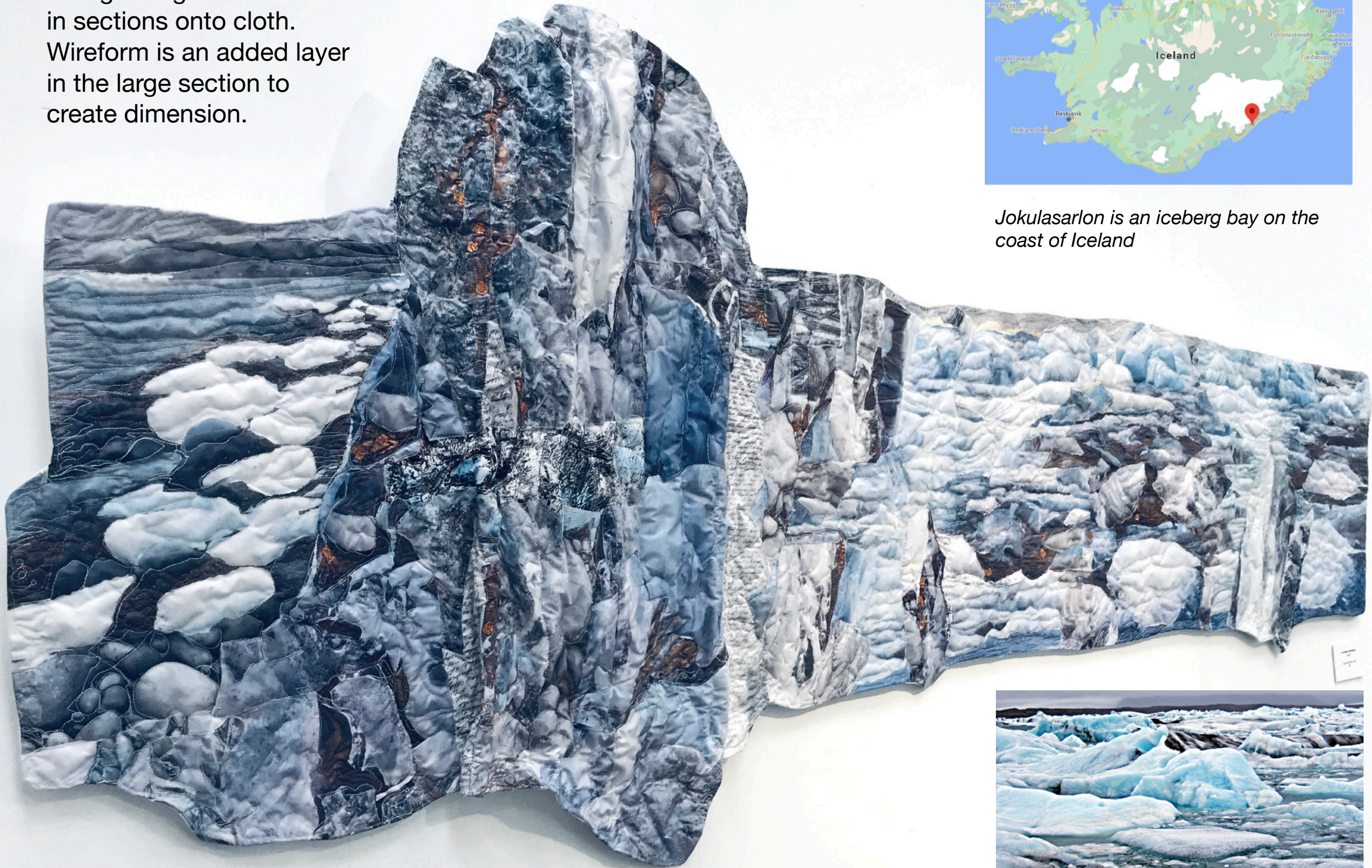
This stitched textile series was based on my research into Caribou skin clothing during the Diploma in Stitched Textiles in 1998 and went on to influence my work for many years.

The series began with acrylic painted on cloth with stiffened scrim and layered painted hessian couched on top. Large darning stitch 'marks' were meant to replicate the energy of the skin scraping movement with embroidery stitches and beads added by hand.



Continuum

A collection of photos, writings, prints and paintings that are collaged together and heat transferred in sections onto cloth. Wireform is an added layer in the large section to create dimension.



Jokulasarlón is an iceberg bay on the coast of Iceland



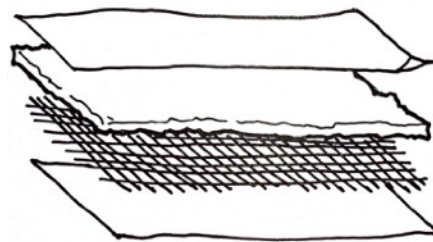


Ice slice - 2006

Iceland photos, paintings and collage became the starting point for my 'Meltdown' series. My focus now reflected melting ice and glaciers and the worldwide effects of climate change. Copper shim, thread and paint was included to reflect the melting ice.

The paper collage was photographed as a jpg, flipped horizontally on the computer and printed onto heat transfer paper and ironed onto cotton.

Wireform (a sculptors wire mesh) forms an additional layer. Machine stitch is added and the surface is manipulated for dimension.



Top layer, wadding, Wireform, bottom layer, then machine stitch.



Scrunched foil print on cotton



What Lies Beneath

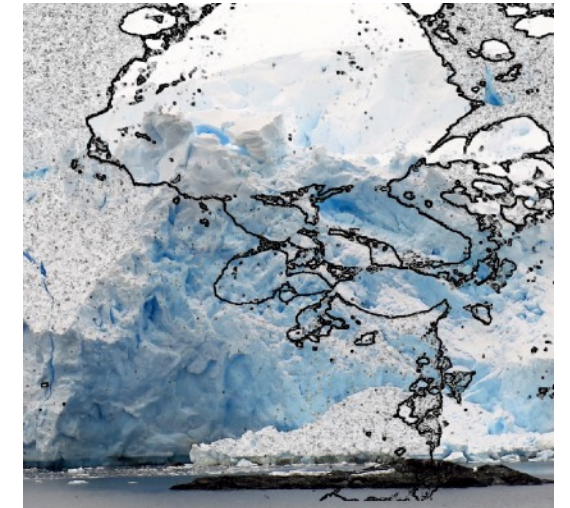
For this series all the photos were collaged on the computer first with fossil and tree drawings added later. The image was broken into sections and printed onto large 11 x 17" heat transfer papers in reverse.

Then the pages are ironed in sections together onto one piece of white cotton - each quilt is 36" square and fixed onto a canvas for presentation. The red/orange threads reflect melting ice.

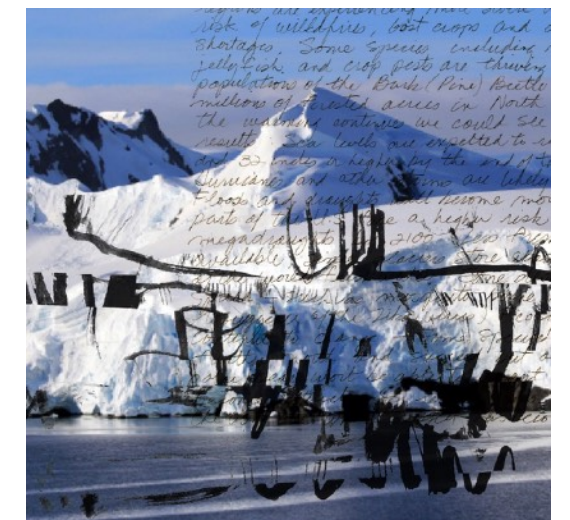
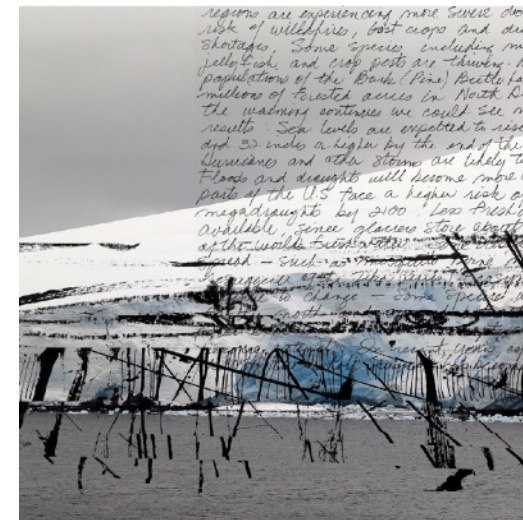


Polar Stitch Studies

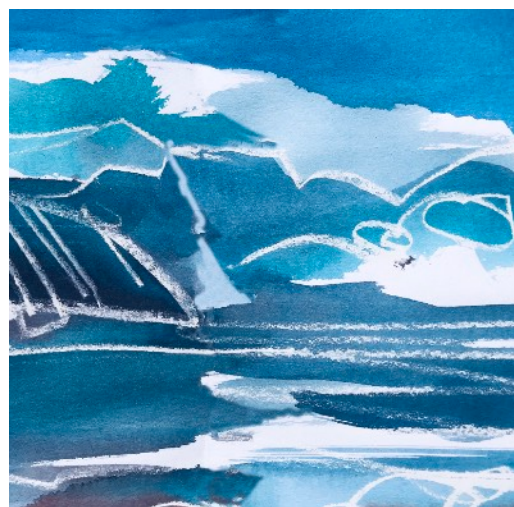
Sketchbook paintings and photos with overlays to begin. A great number of variations became a large number of small stitch pieces.



A section of a sketchbook page or photo with marks or maps added.



Sometimes text is included with a focus on climate change.



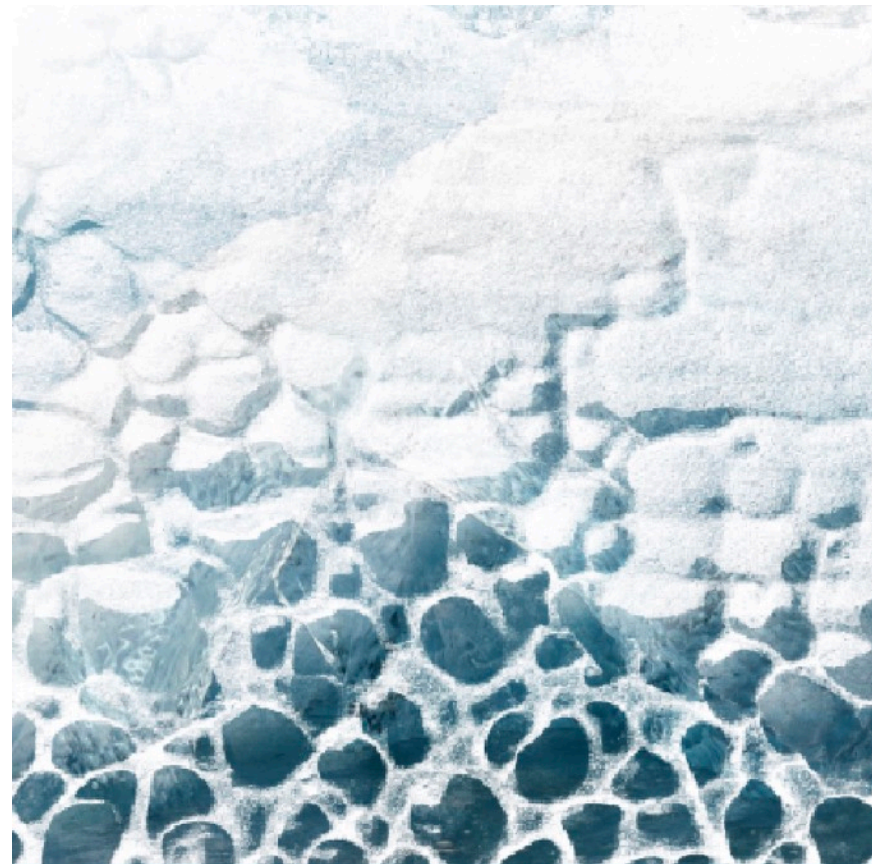
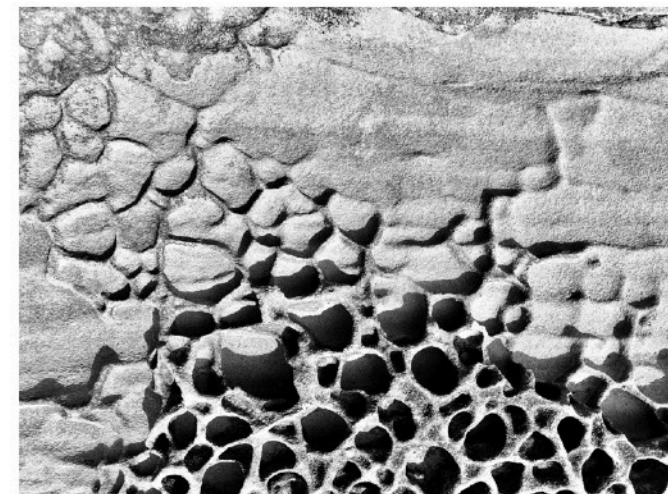
The chosen sketchbook pages were photographed and often the jpg is edited to remove the page fold mark. It is then printed (in reverse) onto heat transfer paper and ironed onto white cotton.

The images on the right have been stitched.

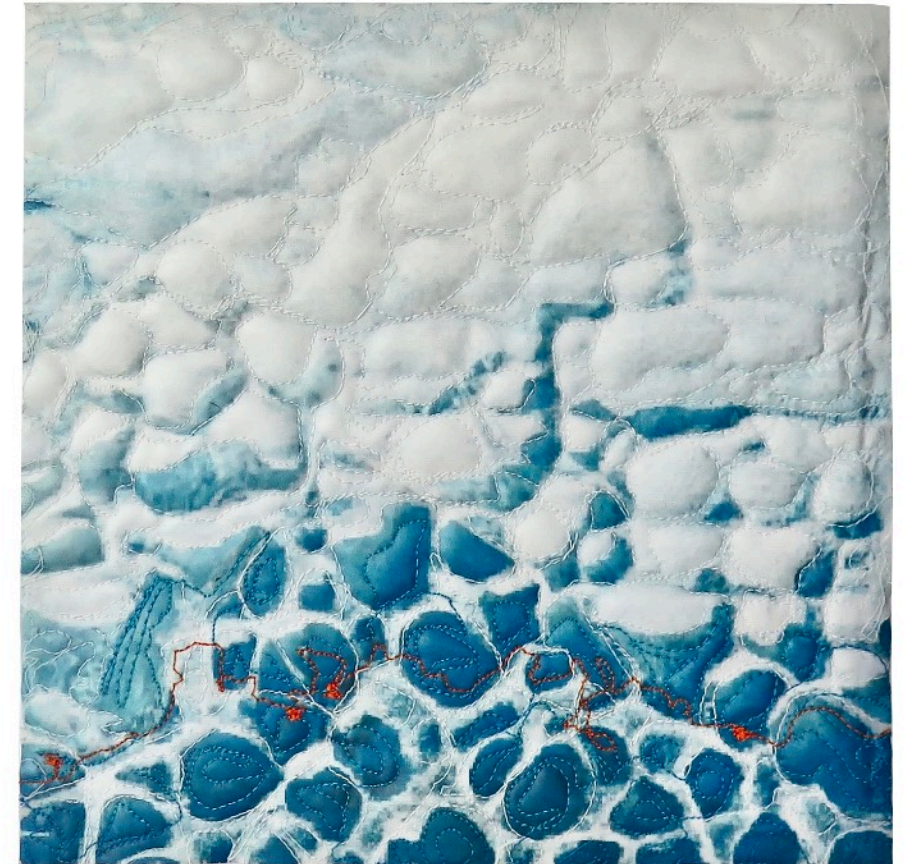


Using photos for added texture

A photo of a textured sea wall on the coast looked like ice and with some Photoshop manipulation and layering, this image went on to create some added texture. Making photographic detail black and white gives you a sense of their potential.

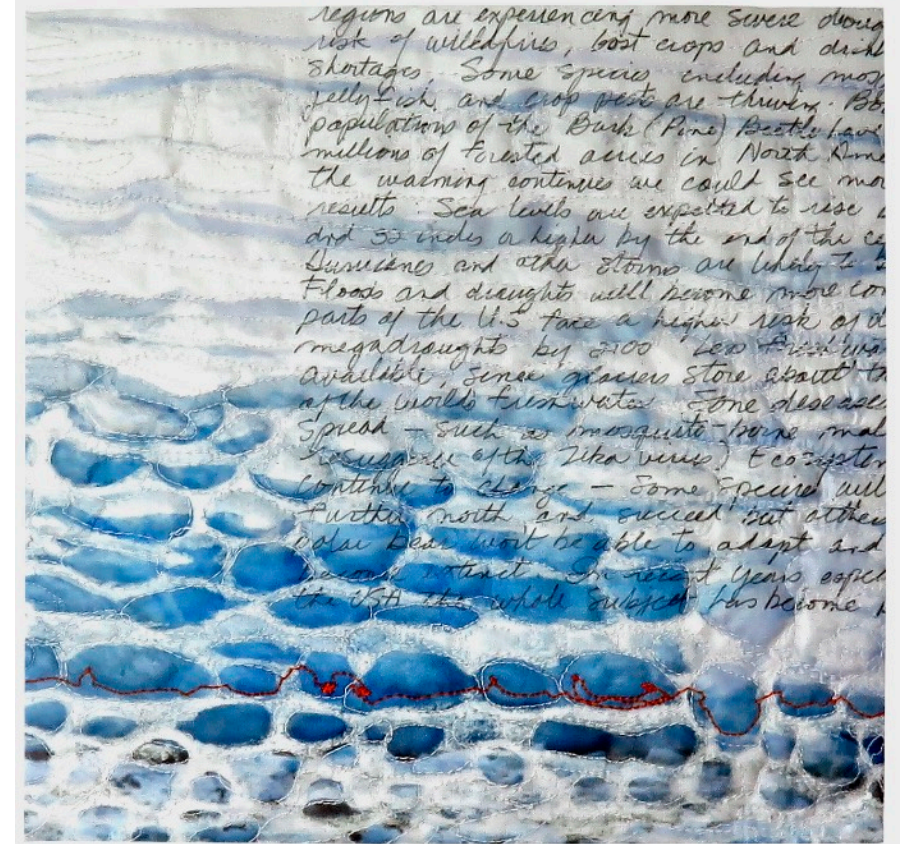


Changing the hue and saturation or inverting an images could hold different possibilities. Above black and white becomes an ice colour and below used as an extra layer on a painting.



Above, image is heat transferred onto cloth, layered and stitch added.

Below a similar surface has another layer of text added before being heat transferred onto cloth and stitched.



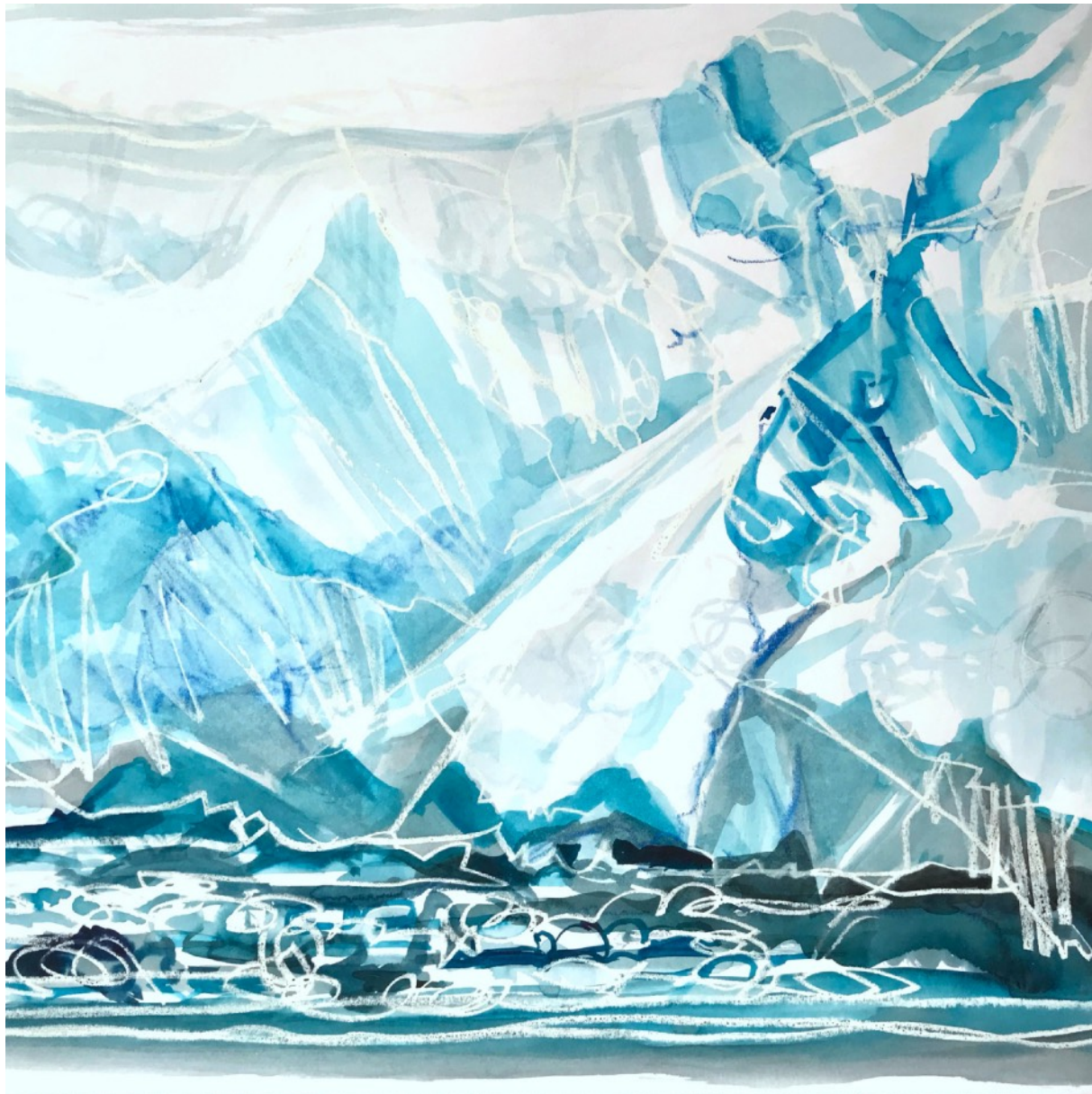
regions are experiencing more severe drought risk of wildfires, food crops and drink shortages. Some species including many jellyfish and crop pests are thriving. BB population of the Bark (Pine) Beetle have millions of forested acres in North America the warming continues we could see more results: Sea levels are expected to rise a foot and 50 inches or higher by the end of the century. Hurricanes and other storms are likely to increase. Floods and droughts will become more common. parts of the U.S face a higher risk of drought by 2100. Less fresh water available, some glaciers store about 1/3 of the world's fresh water. Some disease spread - such as mosquito-borne malaria - will spread to new areas. Ecosystems continue to change - Some species will shift their range north and south but others like polar bear won't be able to adapt and become extinct. In recent years, especially the USA the whole subject has become

Photo inspiration

Paintings in watercolour with resists and added pencil continue to be one of my main starting point. They are the photographed (or scanned) to create an image that can be printed and transferred onto cotton.

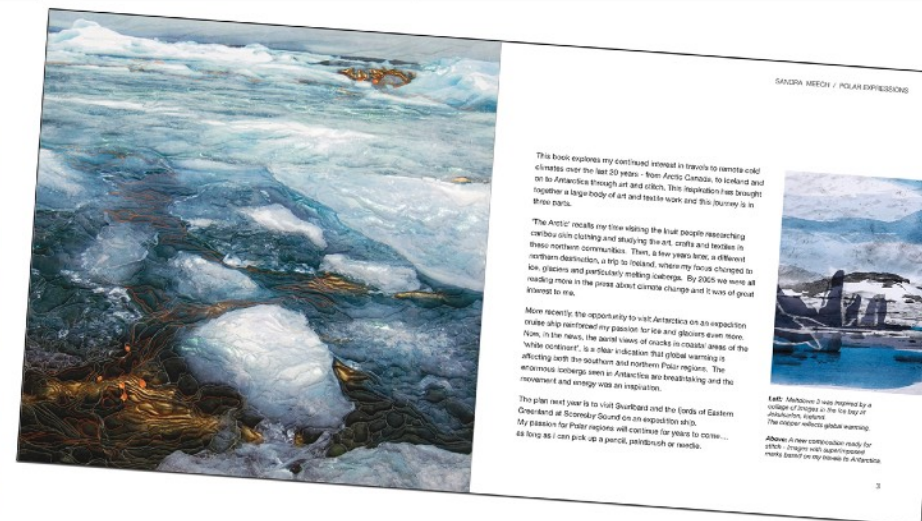
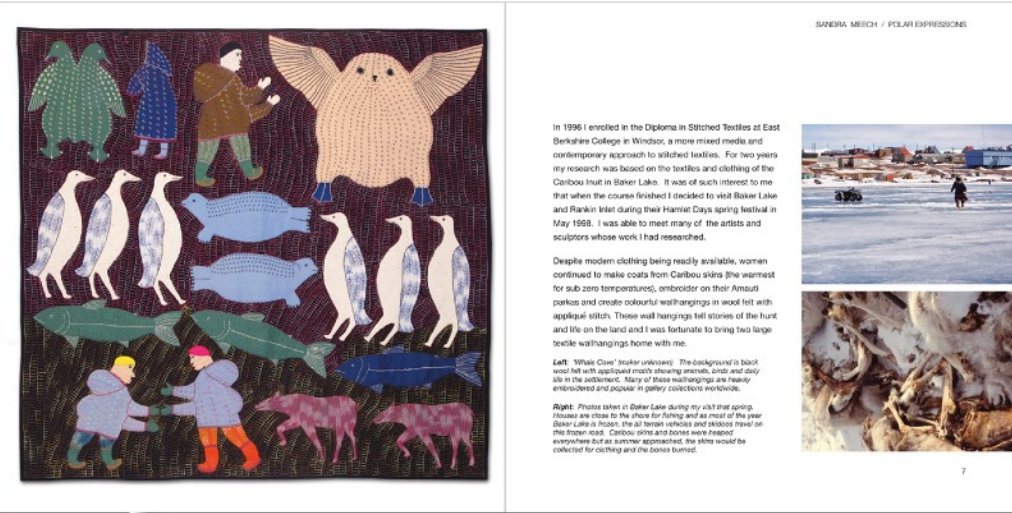
1 layer with sew-in Vilene (Pelon) and free machine stitch.

The added red thread reflects the melting ice.

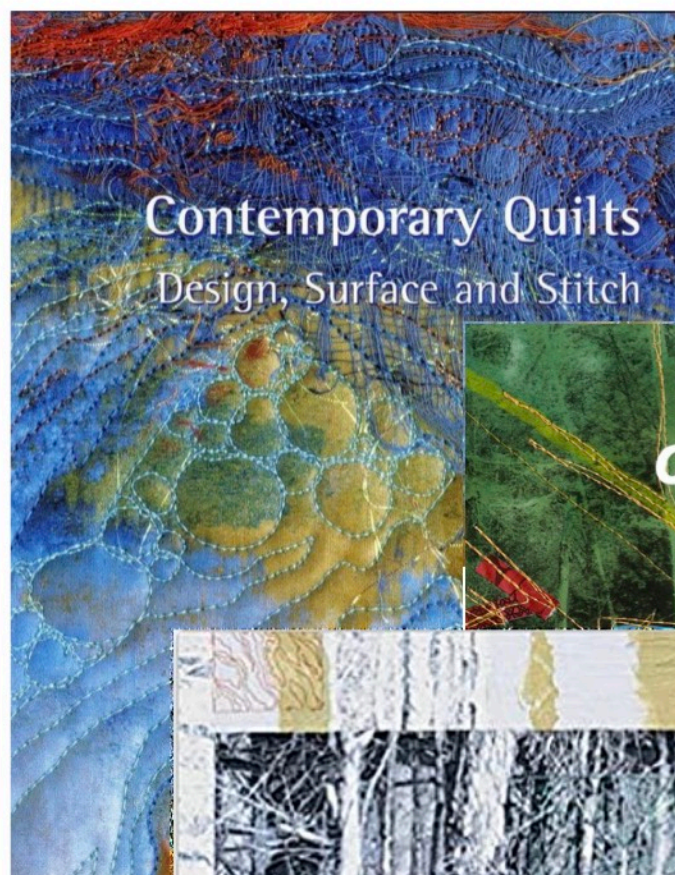


I have produced a small book called 'Polar Expressions' - my journey from the Arctic, to Iceland and Antarctica in art and stitched textiles.

The focus for the last 20 years has been a reflection on climate change in these vulnerable areas. We are now all experiencing extremes in our weather and it is time to seriously consider the welfare of the planet and the generations to come.



Some images from my Polar Expressions gallery at the Festival of Quilts, Birmingham, NEC, UK



Contemporary Quilts
Design, Surface and Stitch

My books are available on www.amazon.com and feature many of my Polar quilts and stitched textiles.



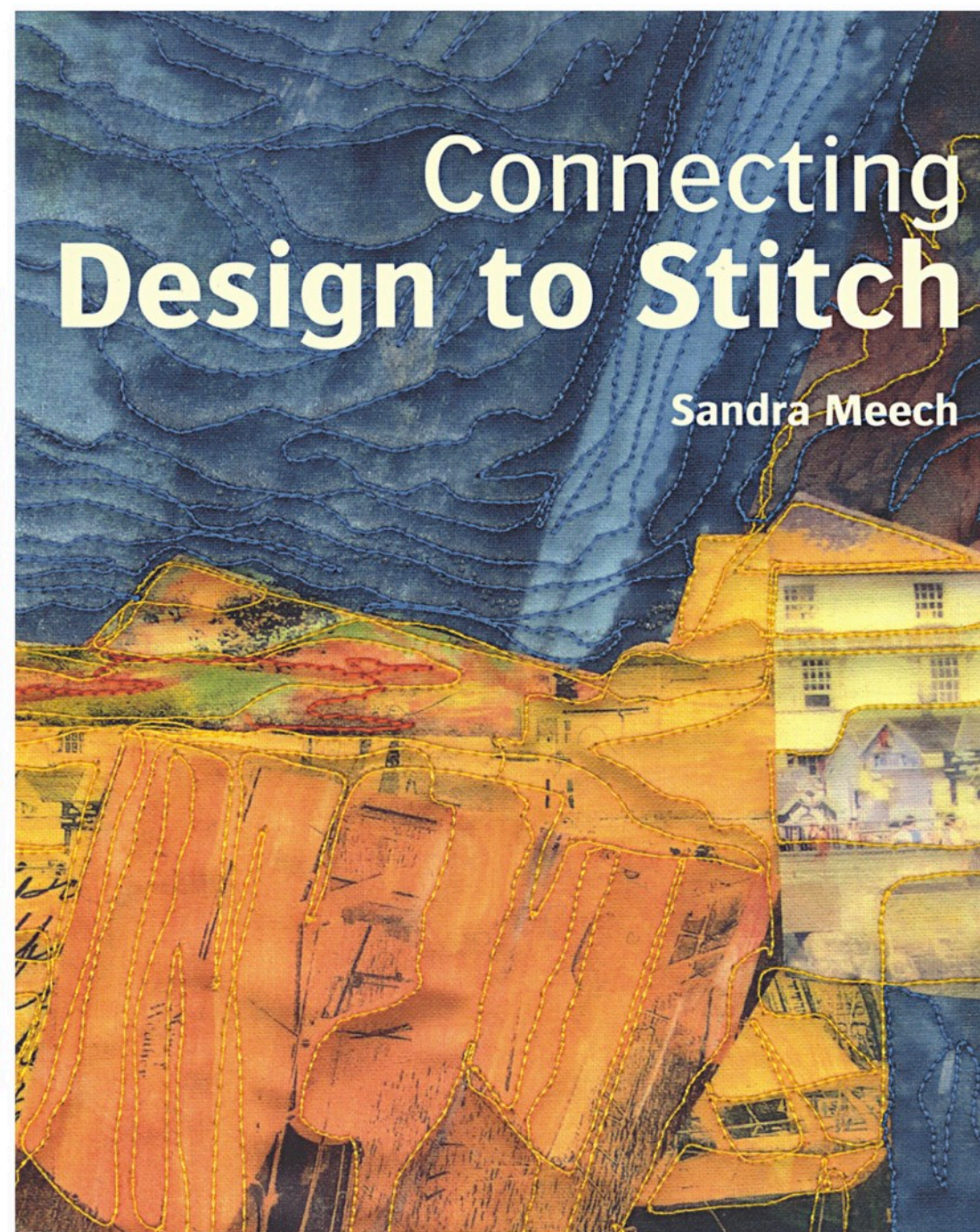
connecting
art to stitch



Creative Quilts

Unlock your creativity with design classes and techniques

Sandra Meech



Connecting
Design to Stitch

Sandra Meech

My sincere thanks again to Visions Art Museum for this wonderful opportunity to show my work, be part of this important exhibition and meet so many quilt and stitch textile enthusiasts.

www.sandrameech.com